

Summary:

The Coconut Grove area of the City of Miami is one of the most diverse areas of the city. In the last decade this area has seen incredible development. Unfortunately the development has been isolated to the east side of Coconut Grove. Coconut Grove is basically divided into two sections, the Northeast area where the business district is located and the West Grove, which is primarily, black and economically depressed.

Drug sales and a number of "Quality of Life Issues" could be observed as you drive through the West Grove. Officers who worked the area had become frustrated with the problems of the area. They felt that residents did not care if the area improved.

Community meetings held by the Miami Police Department revealed that many of the residents are concerned and are looking to the police department to solve the problems. Surveys showed residents were most concerned about speeding in the area, drug sales and use, and "Quality of Life" issues. "Quality of Life" issues such as drinking in public, disorderly intoxication and panhandling may not seem important to many, unless this activity occurs on the street on which you reside.

One of the most important aspects of our work is gaining the trust and commitment of the area residents. This is why the Miami Police Department is committed to bridging the gap between the community and the police department. All members of the Problem Solving Team, participate in community activities. Examples are area clean-ups, bike giveaways to the disadvantaged youth that live in the targeted area and events such as basketball games that allow two very diverse groups to interact with one another in a competitive yet friendly competition. This unique opportunity allowed the officers to observe local youths outside of the normal scope of their daily routine, while allowing the youth group to see the police officers as men and women who are concerned about the community they serve.

A result of the increased trust of the community towards the police department is the increase in the number of tips we have received as to drug sales.

There has been a notable decrease in crime in the West Grove since this project was started. Auto thefts have decreased by 23% while burglaries were reduced by 26%, assault and batteries declined by 14%.

DW:dw

The Coconut Grove Problem Solving Team

City of Miami Police Department

The Problem: Scanning

The Coconut Grove area of the City of Miami is one of the most diverse areas of the city. It is unique unto itself, from the million-dollar homes located on the water's edge to the bustling business district where nightclubs, restaurants, movie theaters and every type of retail shop imaginable can be found. It plays host to thousands of visitors each day. In the last decade this area has seen incredible development. Unfortunately the development has been isolated to the east side of Coconut Grove.

Coconut Grove is basically divided into two sections. The Northeast area where the business district is located and the West Grove, which is primarily, black and economically depressed.

The area, known as the West Grove has a rich history dating back to the early Bahamian settlers. Many residents of the West Grove can trace their roots back to those early residents. A majority of the residents own their homes. Unfortunately this area has not experienced the development, as has the rest of the Grove. Due to the economic climate, the West Grove has deteriorated over the same decade that saw prosperity come to the rest of the Coconut Grove.

Drug sales and a number of "Quality of Life Issues" could be observed as you drive through the West Grove. Grand Avenue is the main thoroughfare that runs through the area. Much of the criminal activity occurred on this street.

Many businesses, such as convenience stores and bars, encouraged criminal activity directly or indirectly by not working with city agencies to help solve the problems.

For a number of years the intersection of Grand Avenue and Douglas Road was the scene of so many robberies that the Police Department was require to have an officer stationed at the location twenty-four hours a day. The officer could not leave the intersection under any circumstances during his or her tour of duty unless relieved by another officer.

Many local residents complained about Grand Avenue. Approximately 95% of the complaints came from homeowners who live in the area. Many feel if the West Grove can have a chance at revitalization, Grand Avenue should be the first area to be targeted.

Officers who worked the area had become frustrated with the problems of the area. They felt that residents did not care if the area improved.

Community meetings held by the Miami Police Department and supervised by Randy Atlas Phd of Atlas Safety & Security Design, Inc. have revealed that many of the residents are concerned and are looking to the police department to solve the problems. Surveys conducted by Clinton Terry Phd. of the Criminal Justice Research Associates, Inc. and the Local Development Corporation showed residents were most concerned about speeding in the area, drug sales and use, and "Quality of Life" issues.

Analysis:

Grand Avenue is the main east and west thoroughfare into the Coconut Grove Business District. The area consists of businesses, apartment buildings, churches, and parks as well as empty lots. There are also a number of buildings that are unoccupied. The Mini Park located at the corner of Grand Avenue and Elizabeth Street was in disrepair. Drug sellers and buyers could be found in the park throughout the day and night. This leads itself to an appearance that the area is blighted and distressed.

In the four blocks targeted area of Grand Avenue sixteen (16) pay phones can be found. The phones are utilized by drug sellers to position themselves on Grand Avenue in order to be more visible to buyers passing by in vehicles. Much of the local illegal drug trade could be found on Grand Avenue. Due to the traffic in and out of the Business District, over the years it has become a popular place for buyers to purchase their drugs of choice. Vehicles could be found stopping along the Avenue, as sellers come to the cars to take orders for illegal drugs. Another problem was, the West Grove is surrounded by affluent neighborhoods. Many of the buyers are white and do not live in the West Grove, but nearby in Coral Gables, South Miami and the Northeast Grove.

Over the years, a small group of local residents have operated the drug trade in the West Grove. A majority of the individuals arrested for selling drugs live in the area, while most buyers do not. The process of selling illegal drugs has gotten more complex in recent years. Certain drug sellers will deliver drugs to your home using bicycles. Surveillance of these carriers has revealed the drugs are being delivered to homes in the more affluent areas that surround the West Grove.

Certain businesses located on Grand Avenue contribute to the decline in the "Quality of Life" by selling alcoholic beverages that are consumed on nearby sidewalks and empty lots. The practice of just hanging out had become an art form to many whom live in the local apartment buildings on Grand Avenue.

"Quality of Life" issues such as drinking in public, disorderly intoxication and panhandling may not seem important to many, unless this activity occurs on the street on which you reside.

As the area of Grand Avenue has deteriorated, the decay has spread into the residential area north and south of Grand Avenue. Drug abusers search the neighborhoods looking to steal anything that could be sold to feed their habit.

Police personnel primarily assigned to the West Grove was inconsistent. Officers assigned to the area often did not want to be assigned there, and were assigned on a temporary basis from month to month. Officers never had an opportunity to become familiar with the community.

The City of Miami, it's police department and the community were not working together to solve the problems of the area.

Response:

The Miami Police Department's response to the constant problems in the West Grove began with "Zero Tolerance". Using officers from other units of the department, the West Grove was patrolled twenty hours a day, seven days a week, using eight to ten extra officers. Eighteen signs

notifying visitors that the area was a "Zero Tolerance" area were placed throughout the Coconut Grove area including the West Grove. This strategy had limited success due to the continuous changing of police personnel.

Using a grant from the Federal Government, ten officers were permanently assigned to patrol the West Grove. The team of specially trained officers was selected utilizing an interview process. Officers were required to demonstrate a desire to work in the West Grove. The team would work in the community to solve problems the residents deemed important, hence the name "Problem Solving Team".

The first area that was targeted was Grand Avenue from Margaret Street west to Douglas Road: This was a four-block area that consists of businesses, apartment buildings, a church and several empty lots.

Members of the "Problem Solving Team" have contacted business owners, property owners, residents as well as other stakeholders of the targeted area. They have documented the area through photographs, personal observations and departmental records. The "Team" members also began to document violations of City, County and State laws. Files were established on all businesses and apartment buildings that were found to be in violation. Files were also maintained on individuals arrested in the targeted area. Areas that drugs were being used or sold were also targeted along with "Quality of Life Issues".

Using a series of community meetings, objectives for the Problem Solving Team have been established. Other departments from the City of Miami have been utilized to enhance and work alongside the "Team" members.

Problem locations were assigned to individual officers of the "Problem Solving Team". The officers were responsible for tracking infractions and violations at those locations. The officers with the assistance of Officer Chiquita Thomas, the NRO, have collected information to bring the violators before the "Nuisance Abatement Board".

Individuals who have been found to be in violation of the law have been arrested. The drug sellers and buyers have been prosecuted to the fullest extent of the law.

Assessment:

The progress of the program has been examined using the continuing community meeting format and citizen surveys. Members of the community have advised the "Team" what improvements they have observed in the area and in what areas we should further direct our efforts. At a recent meeting, several citizens had concerns as to speeding in the area and the placement of stop signs on Oak and Day Avenues. The City of Miami has been able to have the signs placed and complaints of speeding in the area have been reduced. Increased enforcement of speed zones has also had an effect.

Another way the Miami Police Department receives information on citizen's concerns is through the Office of Commissioner Johnny Winton. In the last eighteen months Commissioner Winton's Office has contacted our office to address concerns that have come to their attention. These concerns have been related to police matters. A number of other requests have come from me, personally after daily tours of the area. The Southwest Grove NET office and the Police Department have addressed a number of these concerns jointly.

The intersection of Grand Avenue and Douglas Road, once a location for numerous robberies has not had any type incident in over a year. There is no longer a need for an officer to be stationed there. This allows those officers to provide better coverage for all the West Grove.

A situation that we have seen in this project is that many of the problems on Grand Avenue have been displaced to other areas of the community. Once we recognized other areas were experiencing problems, we began to target those areas, while continuing to monitor Grand Avenue. Grand Avenue is visibly improved, an example is the Mini Park, which has been renovated and is now the home of numerous checker and domino tournaments. Drug sellers and buyers are no longer seen standing in the park.

The Coconut Grove Local Development Corporation has assisted the Police Department in gathering data, conducting surveys, organizing community meetings and monitoring our progress.

One of the most important aspects of our work is gaining the trust and commitment of the area residents. This is why the Miami Police Department is committed to bridging the gap between the community and the police department. All members of the Problem Solving Team, including myself, participate in community activities. Over the last six months we have participated in over thirty community activities in the West Grove. Examples are area clean-ups, bike giveaways to the disadvantaged youth that live in the targeted area and events such as basketball games that allow two very diverse groups to interact with one another in a competitive yet friendly competition. This unique opportunity allowed the officers to observe local youths outside of the normal scope of their daily routine, while allowing the youth group to see the police officers as men and women who are concerned about the community they serve.

A result of the increased trust of the community towards the police department is the increase in the number of tips we have received as to drug sales. In the last seven months since the Problem Solving Team was established we have received hundred of tips related to possible drug houses. Many of these tips have lead to arrests and seizures of illegal drugs. We also have received tips on other illegal activities such as illegal dumping and drinking in public.

There has been a notable decrease in crime in the Coconut Grove area since this project was started. Auto thefts have decreased by 23%, burglaries by 26%, while assaults and batteries declined 14%. Overall crime was reduced by 23% from the year 2001.

With the help of the dedicated officers of the Coconut Grove Problem Solving Team and the community, we have begun to make a difference in this area that was for so long overlooked and neglected.

DW:dw

City of Miami

Monthly CAD Comparison

February 2001

Coconut Grove

	2000 January	2000 February	2000 YTD	2001 January	2001 February	2001 YTD	% Change Feb 2000 Feb 2001	% Change Jan 2001 vs Feb 2001	% Change Y.T.D. 2000 vs 2001
Homicides	0	0	0	1	0	1	N/M	-100%	N/M
Stolen M.V.	26	24	50	19	18	37	-25%	-5%	-26%
Burglary	30	27	57	34	29	63	7%	-15%	11%
Larceny	143	119	262	134	120	254	1%	-10%	-3%
Robbery	16	9	25	11	10	21	11%	-9%	-16%
Assault/Battery	32	33	65	49	40	89	21%	-18%	37%
Sex Offenses	3	0	3	0	1	1	N/M	N/M	-67%
Total	250	212	462	248	218	466	3%	-12%	1%
Property Crimes	199	170	369	187	167	354	-2%	-11%	-4%
Persons Crimes	51	42	93	61	51	112	21%	-16%	20%
Arrests	167	148	315	165	143	308	-3%	-13%	-2%
Total Calls For Service	1750	1576	3326	1753	1628	3381	3%	-7%	2%
Priorities 3, 4, 5 & 6	994	914	1908	1035	987	2022	8%	-5%	6%
Firearm Offenses	0	0	0	1	0	1	N/M	-100%	N/M
Domestic Violence	24	15	39	14	16	30	7%	14%	-23%

Note: The Homicide totals are from the homicide board.

Signal Counts are from C.A.D.

Auto Thefts are C.A.D. signal 22

Burglaries are C.A.D. signal 26

Larcenies are C.A.D. signals 21 & 27

Robberies are C.A.D. signal 29

Assault/Batteries are C.A.D. signal 32

Sex Offenses are C.A.D. signal 33

Arrests are from C.A.D. and include all arrest types

Property Crime is the total of Auto Thefts, Burglaries & Larcenies

Persons Crimes is the total of Robberies, Assaults & Sex Offenses

Miami Police Department

Computer Support Unit 400 NW 2 Avenue, Miami, Florida 33128 (305)579-6524
Printed 1/29/2002

City of Miami

Monthly CAD Comparison

March 2001

Coconut Grove

	2000 February	2000 March	2000 YTD	2001 February	2001 March	2001 YTD	% Change March 2000 March 2001	% Change Feb 2001 vs March 2001	% Change Y.T.D. 2000 vs 2001
Homicides	0	0	0	0	0	1	0%	0%	100%
Stolen M.V.	24	34	84	18	27	64	-21%	50%	-24%
Burglary	29	29	88	29	31	94	7%	7%	7%
Larceny	127	126	396	120	108	362	-14%	-10%	-9%
Robbery	10	16	42	10	13	34	-19%	30%	-19%
Assault/Battery	34	51	117	40	46	135	-10%	15%	15%
Sex Offenses	0	0	3	1	1	2	100%	0%	-33%
Total	224	256	730	218	226	692	-12%	4%	-5%
Property Crimes	180	189	568	167	166	520	-12%	-1%	-8%
Persons Crimes	44	67	162	51	60	172	-10%	18%	6%
Arrests	155	185	507	143	170	478	-8%	19%	-6%
Total Calls For Service	1635	1866	5251	1628	1802	5183	-3%	11%	-1%
Priorities 3, 4, 5 & 6	914	1057	2965	987	1082	3104	2%	10%	5%
Firearm Offenses	0	0	0	0	0	1	0%	0%	100%
Domestic Violence	15	27	66	16	18	48	-33%	13%	-27%

Note: The Homicide totals are from the homicide board.

Signal Counts are from C.A.D.

Auto Thefts are C.A.D. signal 22

Burglaries are C.A.D. signal 26

Larcenies are C.A.D. signals 21 & 27

Robberies are C.A.D. signal 29

Assault/Batteries are C.A.D. signal 32

Sex Offenses are C.A.D. signal 33

Arrests are from C.A.D. and include all arrest types

Property Crime is the total of Auto Thefts, Burglaries & Larcenies

Persons Crimes is the total of Robberies, Assaults & Sex Offenses

Miami Police Department

Computer Support Unit 400 NW 2 Avenue, Miami, Florida 33128 (305)579-6524
Printed 1/29/2002

City of Miami

Monthly CAD Comparison

April 2001

Coconut Grove

	2000 March	2000 April	2000 YTD	2001 March	2001 April	2001 YTD	% Change April 2000 April 2001	% Change March 2001 vs April 2001	% Change Y.T.D. 2000 vs 2001
Homicides	0	0	0	0	1	2	0%	0%	100%
Stolen M.V.	34	19	103	27	25	89	32%	-7%	-14%
Burglary	29	26	114	31	26	120	0%	-16%	5%
Larceny	126	130	526	108	95	457	-27%	-12%	-13%
Robbery	16	12	54	13	12	46	0%	-8%	-15%
Assault/Battery	51	45	162	46	36	171	-20%	-22%	6%
Sex Offenses	0	3	6	1	3	5	0%	200%	-17%
Total	256	235	965	226	198	890	-16%	-12%	-8%
Property Crimes	189	175	743	166	146	666	-17%	-12%	-10%
Persons Crimes	67	60	222	60	52	224	-13%	-13%	1%
Arrests	185	76	583	170	182	660	139%	7%	13%
Total Calls For Service	1866	1531	6782	1802	1655	6838	8%	-8%	1%
Priorities 3, 4, 5 & 6	1057	898	3863	1082	981	4085	9%	-9%	6%
Firearm Offenses	0	0	0	0	0	1	0%	0%	100%
Domestic Violence	27	9	75	18	10	58	11%	-44%	-23%

Note: The Homicide totals are from the homicide board.

Signal Counts are from C.A.D.

Auto Thefts are C.A.D. signal 22

Burglaries are C.A.D. signal 26

Larcenies are C.A.D. signals 21 & 27

Robberies are C.A.D. signal 29

Assault/Batteries are C.A.D. signal 32

Sex Offenses are C.A.D. signal 33

Arrests are from C.A.D. and include all arrest types

Property Crime is the total of Auto Thefts, Burglaries & Larcenies

Persons Crimes is the total of Robberies, Assaults & Sex Offenses

City of Miami

Monthly CAD Comparison

May 2001

Coconut Grove

	2000 April	2000 May	2000 YTD	2001 April	2001 May	2001 YTD	% Change May 2000 vs May 2001	% Change April 2001 vs May 2001	% Change Y.T.D. 2000 vs 2001
Homicides	0	0	0	1	0	2	0%	-100%	200%
Stolen M.V.	19	32	135	25	19	108	-41%	-24%	-20%
Burglary	26	38	152	26	14	134	-63%	-46%	-12%
Larceny	130	166	692	95	108	565	-35%	14%	-18%
Robbery	12	21	75	12	16	62	-24%	33%	-17%
Assault/Battery	45	35	197	36	44	215	26%	22%	9%
Sex Offenses	3	1	7	3	1	6	0%	-67%	-14%
Total	235	293	1258	198	202	1092	-31%	2%	-13%
Property Crimes	175	236	979	146	141	807	-40%	-3%	-18%
Persons Crimes	60	57	279	52	61	285	7%	17%	2%
Arrests	76	90	673	182	155	815	72%	-15%	21%
Total Calls For Service	1531	1818	8600	1655	1653	8491	-9%	0%	-1%
Priorities 3, 4, 5 & 6	898	1113	4976	981	1024	5109	-8%	4%	3%
Firearm Offenses	0	0	0	0	0	1	0%	0%	100%
Domestic Violence	9	21	96	10	14	72	-33%	40%	-25%

Note: The Homicide totals are from the homicide board.

Signal Counts are from C.A.D.

Auto Thefts are C.A.D. signal 22

Burglaries are C.A.D. signal 26

Larcenies are C.A.D. signals 21 & 27

Robberies are C.A.D. signal 29

Assault/Batteries are C.A.D. signal 32

Sex Offenses are C.A.D. signal 33

Arrests are from C.A.D. and include all arrest types

Property Crime is the total of Auto Thefts, Burglaries & Larcenies

Persons Crimes is the total of Robberies, Assaults & Sex Offenses

Miami Police Department

Computer Support Unit 400 NW 2 Avenue, Miami, Florida 33128 (305)579-6524
Printed 1/29/2002

City of Miami

Monthly CAD Comparison

June 2001

Coconut Grove

	2000 May	2000 June	2000 YTD	2001 May	2001 June	2001 YTD	% Change June 2000 vs June 2001	% Change May 2001 vs June 2001	% Change Y.T.D. 2000 vs 2001
Homicides	0	0	0	0	0	2	0%	N/M	N/M
Stolen M.V.	32	34	169	19	17	125	-50%	-11%	-26%
Burglary	38	52	204	14	32	166	-38%	129%	-19%
Larceny	166	214	906	108	115	680	-46%	6%	-25%
Robbery	21	17	92	16	14	76	-18%	-13%	-17%
Assault/Battery	35	43	240	44	32	247	-26%	-27%	3%
Sex Offenses	1	1	8	1	2	8	100%	100%	0%
Total	293	361	1619	202	212	1304	-41%	5%	-19%
Property Crimes	236	300	1279	141	164	971	-45%	16%	-24%
Persons Crimes	57	61	340	61	48	333	-21%	-21%	-2%
Arrests	90	199	872	155	137	952	-31%	-12%	9%
Total Calls For Service	1818	1921	10521	1653	1684	10175	-12%	2%	-3%
Priorities 3, 4, 5 & 6	1113	1059	6035	1024	1016	6125	-4%	-1%	1%
Firearm Offenses	0	0	0	0	0	1	0%	0%	N/M
Domestic Violence	21	9	105	14	16	88	78%	14%	-16%

Note: The Homicide totals are from the homicide board.

Signal Counts are from C.A.D.

Auto Thefts are C.A.D. signal 22

Burglaries are C.A.D. signal 26

Larcenies are C.A.D. signals 21 & 27

Robberies are C.A.D. signal 29

Assault/Batteries are C.A.D. signal 32

Sex Offenses are C.A.D. signal 33

Firearm Offenses are C.A.D. signal 30

Domestic Violence is C.A.D. signal 55

Arrests are from C.A.D. and include all arrest types

Property Crime is the total of Auto Thefts, Burglaries & Larcenies

Persons Crimes is the total of Robberies, Assaults & Sex Offenses

Miami Police Department

Computer Support Unit 400 NW 2 Avenue, Miami, Florida 33128 (305)579-6524
Printed 1/29/2002

City of Miami

Monthly CAD Comparison

July 2001

Coconut Grove

	2000 June	2000 July	2000 YTD	2001 June	2001 July	2001 YTD	% Change July 2000 vs July 2001	% Change June 2001 vs July 2001	% Change Y.T.D. 2000 vs 2001
Homicides	0	0	0	0	0	2	0%	N/M	200%
Stolen M.V.	34	20	189	17	20	145	0%	18%	-23%
Burglary	53	65	268	32	22	188	-66%	-31%	-30%
Larceny	214	178	1076	115	102	782	-43%	-11%	-27%
Robbery	17	13	104	14	15	91	15%	7%	-13%
Assault/Battery	43	55	294	32	37	284	-33%	16%	-3%
Sex Offenses	1	2	10	2	0	8	-100%	-100%	-20%
Total	362	333	1941	212	196	1500	-41%	-8%	-23%
Property Crimes	301	263	1533	164	144	1115	-45%	-12%	-27%
Persons Crimes	61	70	408	48	52	385	-26%	8%	-6%
Arrests	199	146	1018	137	144	1097	-1%	5%	8%
Total Calls For Service	1921	2032	12553	1684	1673	11848	-18%	-1%	-6%
Priorities 3, 4, 5 & 6	1059	1205	7240	1016	1022	7147	-15%	1%	-1%
Firearm Offenses	0	0	0	0	0	1	0%	0%	100%
Domestic Violence	9	26	131	16	11	99	-58%	-31%	-24%

Note: The Homicide totals are from the homicide board.

Signal Counts are from C.A.D.

Auto Thefts are C.A.D. signal 22

Burglaries are C.A.D. signal 26

Larcenies are C.A.D. signals 21 & 27

Robberies are C.A.D. signal 29

Assault/Batteries are C.A.D. signal 32

Sex Offenses are C.A.D. signal 33

Arrests are from C.A.D. and include all arrest types

Property Crime is the total of Auto Thefts, Burglaries & Larcenies

Persons Crimes is the total of Robberies, Assaults & Sex Offenses

Miami Police Department

Computer Support Unit 400 NW 2 Avenue, Miami, Florida 33128 (305)579-6524
Printed 1/29/2002

City of Miami

Monthly CAD Comparison

August 2001

Coconut Grove

	2000 July	2000 August	2000 YTD	2001 July	2001 August	2001 YTD	% Change Aug 2000 vs Aug 2001	% Change Aug 2001 vs July 2001	% Change Y.T.D. 2000 vs 2001
Homicides	0	0	0	0	0	2	N/M	N/M	N/M
Stolen M.V.	20	31	220	20	24	169	-23%	20%	-23%
Burglary	65	46	314	22	19	207	-59%	-14%	-34%
Larceny	178	162	1238	102	121	903	-25%	19%	-27%
Robbery	13	16	120	15	16	107	0%	7%	-11%
Assault/Battery	55	49	343	37	40	324	-18%	8%	-6%
Sex Offenses	2	5	15	0	1	9	-80%	N/M	-40%
Total	333	309	2250	196	221	1721	-28%	13%	-24%
Property Crimes	263	239	1772	144	164	1279	-31%	14%	-28%
Persons Crimes	70	70	478	52	57	442	-19%	10%	-8%
Arrests	146	155	1173	144	140	1237	-10%	-3%	5%
Total Calls For Service	2032	1956	14509	1673	1655	13503	-15%	-1%	-7%
Priorities 3, 4, 5 & 6	1205	1121	8361	1022	1050	8197	-6%	3%	-2%
Firearm Offenses	0	0	0	0	0	1	N/M	N/M	N/M
Domestic Violence	26	21	152	11	14	113	-33%	27%	-26%

Note: The Homicide totals are from the homicide board.

Signal Counts are from C.A.D.

Auto Thefts are C.A.D. signal 22

Burglaries are C.A.D. signal 26

Larcenies are C.A.D. signals 21 & 27

Robberies are C.A.D. signal 29

Assault/Batteries are C.A.D. signal 32

Sex Offenses are C.A.D. signal 33

Arrests are from C.A.D. and include all arrest types

Property Crime is the total of Auto Thefts, Burglaries & Larcenies

Persons Crimes is the total of Homicides, Robberies, Assaults & Sex Offenses

Miami Police Department

Computer Support Unit 400 NW 2 Avenue, Miami, Florida 33128 (305)570-6524

Printed 1/29/2002

City of Miami

Monthly CAD Comparison

September 2001

Coconut Grove

	2000 August	2000 September	2000 YTD	2001 August	2001 September	2001 YTD	% Change Sept 2000 vs Sept 2001	% Change Aug 2001 vs Sept 2001	% Change Y.T.D. 2000 vs 2001
Homicides	0	0	0	0	0	2	0%	0%	N/M
Stolen M.V.	31	21	241	24	14	183	-33%	-42%	-24%
Burglary	46	41	355	19	33	240	-20%	74%	-32%
Larceny	162	144	1382	121	84	987	-42%	-31%	-29%
Robbery	16	10	130	16	17	124	70%	6%	-5%
Assault/Battery	49	41	384	40	40	364	-2%	0%	-5%
Sex Offenses	5	1	16	1	0	9	-100%	-100%	-44%
Total	309	258	2508	221	188	1909	-27%	-15%	-24%
Property Crimes	239	206	1978	164	131	1410	-36%	-20%	-29%
Persons Crimes	70	52	530	57	57	499	10%	0%	-6%
Arrests	155	353	1526	140	102	1339	-71%	-27%	-12%
Total Calls For Service	1956	2043	16552	1655	1558	15061	-24%	-6%	-9%
Priorities 3, 4, 5 & 6	1121	983	9344	1050	968	9165	-2%	-8%	-2%
Firearm Offenses	0	0	0	0	1	2	N/M	N/M	N/M
Domestic Violence	21	23	175	14	14	127	-39%	0%	-27%
I.A. Complaints	0	0	0	1	1	22	N/M	0%	N/M

Note: The Homicide totals are from the homicide board.

Signal Counts are from C.A.D.

Auto Thefts are C.A.D. signal 22

Burglaries are C.A.D. signal 26

Larcenies are C.A.D. signals 21 & 27

Robberies are C.A.D. signal 29

Assault/Batteries are C.A.D. signal 32

Sex Offenses are C.A.D. signal 33

Arrests are from C.A.D. and include all arrest types

Property Crime is the total of Auto Thefts, Burglaries & Larcenies

Persons Crimes is the total of Homicides, Robberies, Assaults & Sex Offenses

Miami Police Department

Computer Support Unit 401 NW 2 Avenue, Miami, Florida 33128 (305) 579-6524
Printed 11/29/2002

City of Miami

Monthly CAD Comparison

October 2001

Coconut Grove

	2000 September	2000 October	2000 YTD	2001 September	2001 October	2001 YTD	% Change Oct 2000 vs Oct 2001	% Change Sept 2001 vs Oct 2001	% Change Y.T.D. 2000 vs 2001
Homicides	0	0	0	0	0	2	0%	0%	N/M
Stolen M.V.	21	23	264	14	18	201	-22%	29%	-24%
Burglary	41	33	388	33	25	265	-24%	-24%	-32%
Larceny	144	113	1495	84	104	1091	-8%	24%	-27%
Robbery	10	14	144	17	15	139	7%	-12%	-3%
Assault/Battery	41	57	441	40	43	407	-25%	8%	-8%
Sex Offenses	1	1	17	0	1	10	0%	N/M	-41%
Total	258	241	2749	188	206	2115	-15%	10%	-23%
Property Crimes	206	169	2147	131	147	1557	-13%	12%	-27%
Persons Crimes	52	72	602	57	59	558	-18%	4%	-7%
Arrests	353	139	1665	102	131	1470	-6%	28%	-12%
Total Calls For Service	2043	1964	18516	1558	1728	16789	-12%	11%	-9%
Priorities 3, 4, 5 & 6	983	1145	10489	968	1049	10214	-8%	8%	-3%
Firearm Offenses	0	2	2	1	1	3	-50%	0%	50%
Domestic Violence	23	12	187	14	11	138	-8%	-21%	-26%

Note: The Homicide totals are from the homicide board.

Signal Counts are from C.A.D.

Auto Thefts are C.A.D. signal 22

Burglaries are C.A.D. signal 26

Larcenies are C.A.D. signals 21 & 27

Robberies are C.A.D. signal 29

Assault/Batteries are C.A.D. signal 32

Sex Offenses are C.A.D. signal 33

Arrests are from C.A.D. and include all arrest types

Property Crime is the total of Auto Thefts, Burglaries & Larcenies

Persons Crimes is the total of Homicides, Robberies, Assaults & Sex Offenses

Miami Police Department

Computer Support Unit 400 NW 2 Avenue, Miami, Florida 33128 (305) 579-6524
Printed 1/29/2002

City of Miami

Monthly CAD Comparison

November 2001

Coconut Grove

	2000 October	2000 November	2000 YTD	2001 October	2001 November	2001 YTD	% Change Nov 2000 vs Nov 2001	% Change October 2001 vs Nov 2001	% Change Y.T.D. 2000 vs 2001
Homicides	0	0	0	0	0	2	0%	0%	N/M
Stolen M.V.	23	17	281	18	16	217	-6%	-11%	-23%
Burglary	33	26	414	25	31	296	19%	24%	-29%
Larceny	113	158	1653	104	100	1191	-37%	-4%	-28%
Robbery	14	8	152	15	20	159	150%	33%	5%
Assault/Battery	57	57	498	43	31	438	-46%	-28%	-12%
Sex Offenses	1	3	20	1	1	11	-67%	0%	-45%
Total	241	269	3018	206	199	2314	-26%	-3%	-23%
Property Crimes	169	201	2348	147	147	1704	-27%	0%	-27%
Persons Crimes	72	68	670	59	52	610	-24%	-12%	-9%
Arrests	139	121	1786	131	121	1591	0%	-8%	-11%
Total Calls For Service	1964	1723	20239	1728	1708	18497	-1%	-1%	-9%
Priorities 3, 4, 5 & 6	1145	973	11462	1049	1049	11263	8%	0%	-2%
Firearm Offenses	2	1	3	1	0	3	-100%	-100%	0%
Domestic Violence	12	19	206	11	16	154	-16%	45%	-25%

Note: The Homicide totals are from the homicide board.

Signal Counts are from C.A.D.

Auto Thefts are C.A.D. signal 22

Burglaries are C.A.D. signal 26

Larcenies are C.A.D. signals 21 & 27

Robberies are C.A.D. signal 29

Assault/Batteries are C.A.D. signal 32

Sex Offenses are C.A.D. signal 33

Arrests are from C.A.D. and include all arrest types

Property Crime is the total of Auto Thefts, Burglaries & Larcenies

Persons Crimes is the total of Homicides, Robberies, Assaults & Sex Offenses

Miami Police Department

Computer Support Unit 400 NW 2 Avenue, Miami, Florida 33128 (305)579-6524
Printed 1/27/2002

City of Miami

Monthly CAD Comparison

December 2001

Coconut Grove

	2000 November	2000 December	2000 YTD	2001 November	2001 December	2001 YTD	% Change Dec 2000 vs Dec 2001	% Change Nov 2001 vs Dec 2001	% Change Y.T.D. 2000 vs 2001
Homicides	0	0	0	0	3	5	N/M	N/M	N/M
Stolen M.V.	17	22	303	16	16	233	-27%	0%	-23%
Burglary	26	40	454	31	39	335	-3%	26%	-26%
Larceny	158	132	1785	100	99	1290	-25%	-1%	-28%
Robbery	8	10	162	20	20	179	100%	0%	10%
Assault/Battery	57	54	552	31	39	477	-28%	26%	-14%
Sex Offenses	3	1	21	1	0	11	-100%	-100%	-48%
Total	269	259	3277	199	216	2530	-17%	9%	-23%
Property Crimes	201	194	2542	147	154	1858	-21%	5%	-27%
Persons Crimes	68	65	735	52	62	672	-5%	19%	-9%
Arrests	121	167	1953	121	107	1698	-36%	-12%	-13%
Total Calls For Service	1723	1941	22180	1708	1916	20413	-1%	12%	-8%
Priorities 3, 4, 5 & 6	973	1160	12622	1049	1133	12396	-2%	8%	-2%
Firearm Offenses	1	1	4	0	0	3	-100%	N/M	-25%
Domestic Violence	19	15	221	16	15	169	0%	-6%	-24%

Note: The Homicide totals are from the homicide board.

Signal Counts are from C.A.D.

Auto Thefts are C.A.D. signal 22

Burglaries are C.A.D. signal 26

Larcenies are C.A.D. signals 21 & 27

Robberies are C.A.D. signal 29

Assault/Batteries are C.A.D. signal 32

Sex Offenses are C.A.D. signal 33

Arrests are from C.A.D. and include all arrest types

Property Crime is the total of Auto Thefts, Burglaries & Larcenies

Persons Crimes is the total of Homicides, Robberies, Assaults & Sex Offenses

Miami Police Department

Computer Support Unit 400 NW 2 Avenue, Miami, Florida 33128 (305)579-6524
Printed 1/29/2002

City of Miami

Monthly CAD Comparison

January 2001

Coconut Grove

	1999 December	2000 January	2000 YTD	2000 December	2001 January	2001 YTD	% Change Jan 2000 Jan 2001	% Change Dec 2000 vs Jan 2001	% Change Y.T.D. 2000 vs 2001
Homicides	0	0	0	0	1	1	N/M	N/M	N/M
Stolen M.V.	25	26	26	22	19	19	-27%	-14%	-27%
Burglary	33	30	30	40	34	34	13%	-15%	13%
Larceny	141	143	143	132	134	134	-6%	2%	-6%
Robbery	19	16	16	10	11	11	-31%	10%	-31%
Assault/Battery	32	32	32	54	49	49	53%	-9%	53%
Sex Offenses	2	3	3	1	0	0	-100%	-100%	-100%
Total	252	250	250	259	248	248	-1%	-4%	-1%
Property Crimes	199	199	199	194	187	187	-6%	-4%	-6%
Persons Crimes	53	51	51	65	61	61	20%	-6%	20%
Arrests	199	167	167	167	165	165	-1%	-1%	-1%
Total Calls For Service	1826	1750	1750	1941	1753	1753	0%	-10%	0%
Priorities 3, 4, 5 & 6	1062	994	994	1160	1035	1035	4%	-11%	4%
Firearm Offenses	0	0	0	1	1	1	N/M	0%	N/M
Domestic Violence	14	24	24	15	14	14	-42%	-7%	-42%

Note: The Homicide totals are from the homicide board.

Signal Counts are from C.A.D.

Auto Thefts are C.A.D. signal 22

Burglaries are C.A.D. signal 26

Larcenies are C.A.D. signals 21 & 27

Robberies are C.A.D. signal 29

Assault/Batteries are C.A.D. signal 32

Sex Offenses are C.A.D. signal 33

Arrests are from C.A.D. and include all arrest types

Property Crime is the total of Auto Thefts, Burglaries & Larcenies

Persons Crimes is the total of Robberies, Assaults & Sex Offenses

Miami Police Department

Computer Support Unit 400 NW 2 Avenue, Miami, Florida 33128 (305)579-6524
Printed 1/29/2002

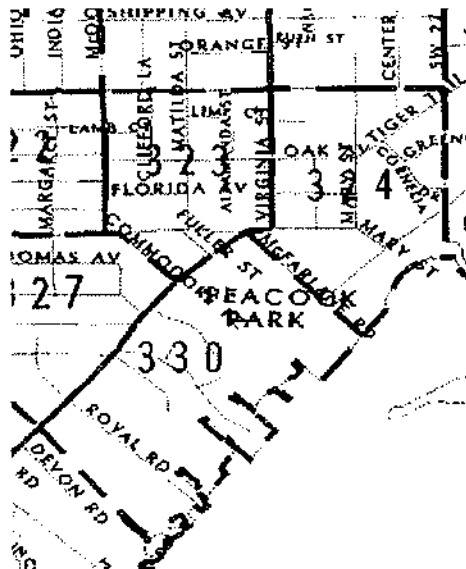
City of Miami
Selected Shopping Areas
CAD Comparison
Crime Reductions by Category

Grove Business District

	1999 December	2000 January	2000 Y.T.D.	2000 December	2001 January	2001 Y.T.D.	% Change December 2000 vs January 2001	% Change Y.T.D. 2000 vs 2001
Stolen M.V.	10	13	13	8	5	5	-38%	-62%
Burglary	3	1	1	6	3	3	-50%	200%
Larceny	69	67	67	62	63	63	2%	-6%
Robbery	4	3	3	1	3	3	200%	0%
Assault/Battery	15	11	11	16	26	26	63%	136%
Sex Offenses	0	1	1	1	0	0	-100%	-100%
Total	101	96	96	94	100	100	6%	4%
Arrests	69	37	37	39	60	60	54%	62%
Calls For Service	478	463	463	565	546	546	-3%	18%

Boundaries: Police Reporting Areas 323, 324 & 330

Coconut Grove NET



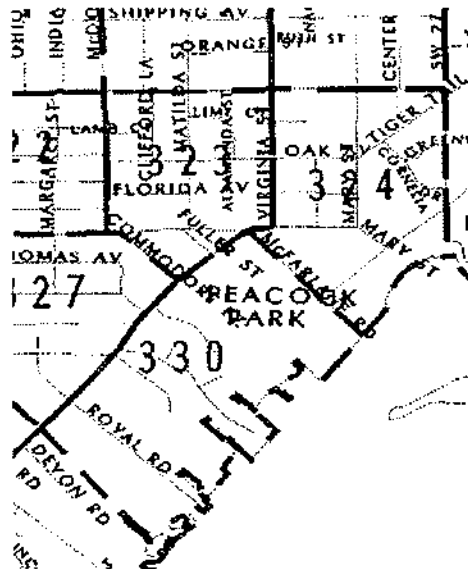
City of Miami
Selected Shopping Areas
CAD Comparison
Crime Reductions by Category

Grove Business District

	2000 January	2000 February	2000 Y.T.D.	2001 January	2001 February	2001 Y.T.D.	% Change January 2001 vs February 2001	% Change Y.T.D. 2000 vs 2001
Stolen M.V.	13	12	25	5	5	10	0%	-60%
Burglary	1	3	4	3	7	10	133%	150%
Larceny	67	44	111	63	44	107	-30%	-4%
Robbery	3	1	4	3	3	6	0%	50%
Assault/Battery	11	12	23	26	14	40	-46%	74%
Sex Offenses	1	0	1	0	1	1	100%	0%
Total	96	72	168	100	74	174	-26%	4%
Arrests	37	32	69	60	40	100	-33%	45%
Calls For Service	463	390	853	546	479	1025	-12%	20%

Boundaries: Police Reporting Areas 323, 324 & 330

Coconut Grove NET



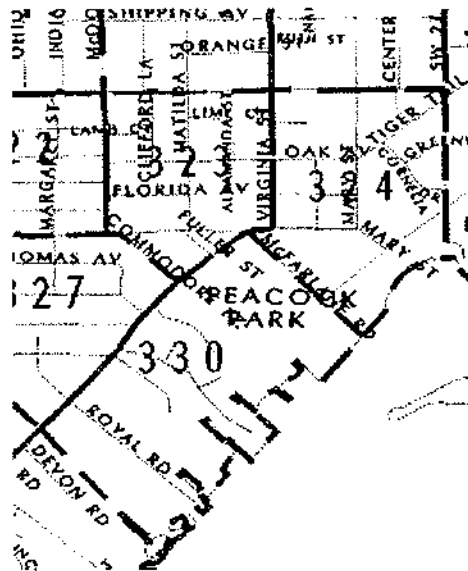
City of Miami
Selected Shopping Areas
CAD Comparison
Crime Reductions by Category

Grove Business District

	2000 February	2000 March	2000 Y.T.D.	2001 February	2001 March	2001 Y.T.D.	% Change February vs March 2001	% Change Y.T.D. 2000 vs 2001
Stolen M.V.	12	5	25	5	7	17	40%	-32%
Burglary	3	4	4	7	2	12	-71%	200%
Larceny	44	55	111	44	31	138	-30%	24%
Robbery	1	4	4	3	2	8	-33%	100%
Assault/Battery	12	21	23	14	16	56	14%	143%
Sex Offenses	0	0	1	1	0	1	-100%	0%
Total	72	89	168	74	58	232	-22%	38%
Arrests	32	58	69	40	38	138	-5%	100%
Calls For Service	390	502	853	479	475	1500	-1%	76%

Boundaries: Police Reporting Areas 323, 324 & 330

Coconut Grove NET



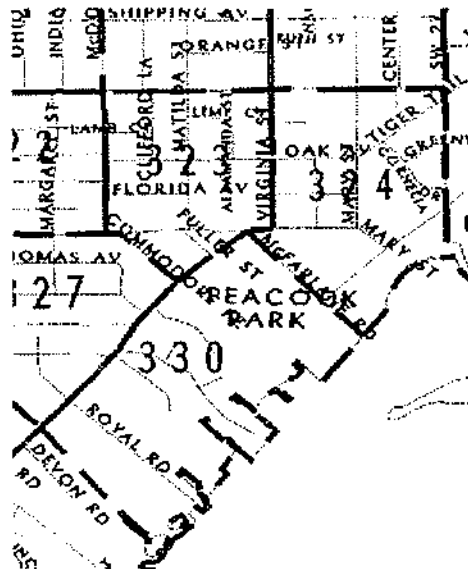
City of Miami
Selected Shopping Areas
CAD Comparison
Crime Reductions by Category

Grove Business District

	2000 March	2000 April	2000 Y.T.D.	2001 March	2001 April	2001 Y.T.D.	% Change March vs April 2001	% Change Y.T.D. 2000 vs 2001
Stolen M.V.	5	6	36	7	8	25	14%	-31%
Burglary	4	3	11	2	2	14	0%	27%
Larceny	55	50	216	31	27	165	-13%	-24%
Robbery	4	1	9	2	1	9	-50%	0%
Assault/Battery	21	14	58	16	8	64	-50%	10%
Sex Offenses	0	0	1	0	0	1	0%	0%
Total	89	74	331	58	46	278	-21%	-16%
Arrests	58	30	157	38	42	180	11%	15%
Calls For Service	502	258	1613	475	419	1919	-12%	19%

Boundaries: Police Reporting Areas 323, 324 & 330

Coconut Grove NET



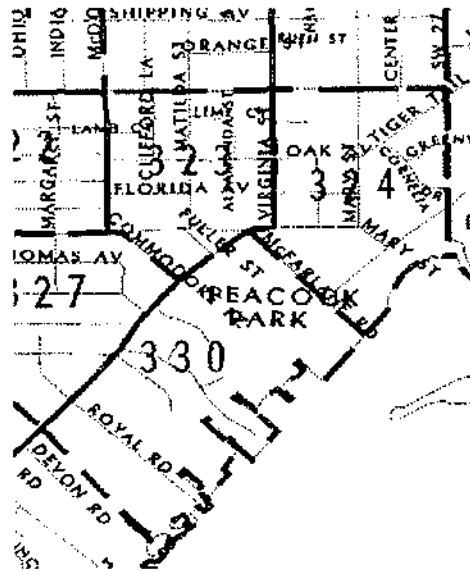
City of Miami
Selected Shopping Areas
CAD Comparison
Crime Reductions by Category

Grove Business District

	2000 April	2000 May	2000 Y.T.D.	2001 April	2001 May	2001 Y.T.D.	% Change April 2001 vs May 2001	% Change Y.T.D. 2000 vs 2001
Stolen M.V.	6	13	49	8	7	32	-13%	-35%
Burglary	3	10	21	2	3	17	50%	-19%
Larceny	50	57	273	27	35	200	30%	-27%
Robbery	1	0	9	1	5	14	400%	56%
Assault/Battery	14	18	76	8	19	83	138%	9%
Sex Offenses	0	0	1	0	0	1	0%	0%
Total	74	98	429	46	69	347	50%	-19%
Arrests	30	25	182	42	27	207	-36%	14%
Calls For Service	258	440	2053	419	422	2341	1%	14%

Boundaries: Police Reporting Areas 323, 324 & 330

Coconut Grove NET



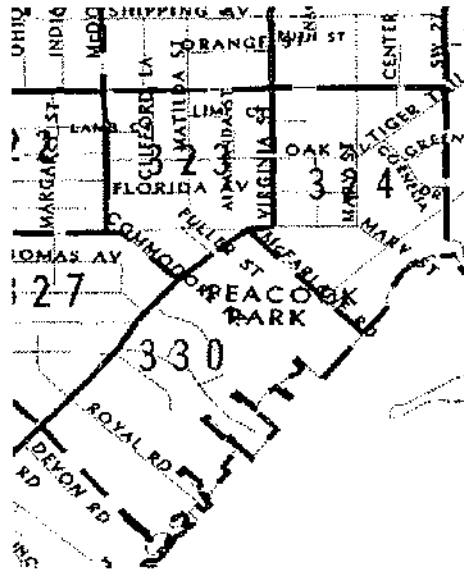
City of Miami
Selected Shopping Areas
CAD Comparison
Crime Reductions by Category

Grove Business District

	2000 May	2000 June	2000 Y.T.D.	2001 May	2001 June	2001 Y.T.D.	% Change May 2001 vs June 2001	% Change Y.T.D. 2000 vs 2001
Stolen M.V.	13	11	60	7	8	40	14%	-33%
Burglary	10	8	29	3	4	21	33%	-28%
Larceny	57	68	341	35	39	239	11%	-30%
Robbery	0	7	16	5	5	19	0%	19%
Assault/Battery	18	11	87	19	10	93	-47%	7%
Sex Offenses	0	1	2	0	0	1	0%	-50%
Total	98	106	535	69	66	413	-4%	-23%
Arrests	25	31	213	27	38	245	41%	15%
Calls For Service	440	462	2515	422	430	2771	2%	10%

Boundaries: Police Reporting Areas 323, 324 & 330

Coconut Grove NET



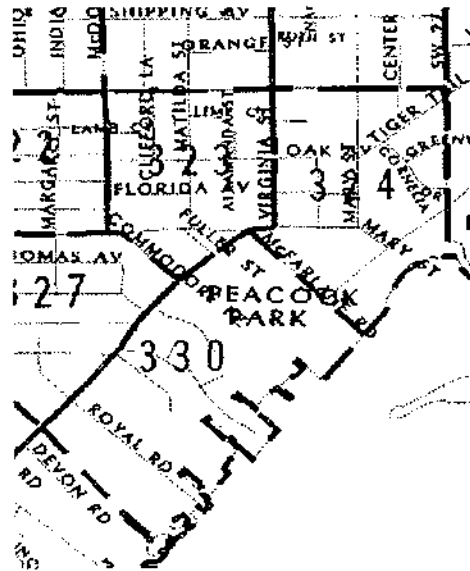
City of Miami
Selected Shopping Areas
CAD Comparison
Crime Reductions by Category

Grove Business District

	2000 June	2000 July	2000 Y.T.D.	2001 June	2001 July	2001 Y.T.D.	% Change June 2001 vs July 2001	% Change Y.T.D. 2000 vs 2001
Stolen M.V.	11	4	64	8	7	47	-13%	-27%
Burglary	8	6	35	4	3	24	-25%	-31%
Larceny	68	77	418	39	31	270	-21%	-35%
Robbery	7	3	19	5	2	21	-60%	11%
Assault/Battery	11	19	106	10	17	110	70%	4%
Sex Offenses	1	1	3	0	0	1	0%	-67%
Total	106	110	645	66	60	473	-9%	-27%
Arrests	31	39	252	38	38	283	0%	12%
Calls For Service	462	548	3063	430	415	3186	-3%	4%

Boundaries: Police Reporting Areas 323, 324 & 330

Coconut Grove NET



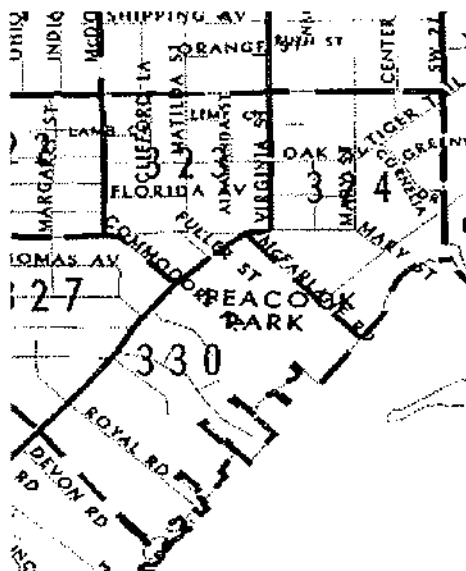
City of Miami
Selected Shopping Areas
CAD Comparison
Crime Reductions by Category

Grove Business District

	2000 July	2000 August	2000 Y.T.D.	2001 July	2001 August	2001 Y.T.D.	% Change July 2001 vs August 2001	% Change Y.T.D. 2000 vs 2001
Stolen M.V.	4	12	76	7	5	52	-29%	-32%
Burglary	6	4	39	3	4	28	33%	-28%
Larceny	77	76	494	31	31	301	0%	-39%
Robbery	3	3	22	2	3	24	50%	9%
Assault/Battery	19	20	126	17	10	120	-41%	-5%
Sex Offenses	1	1	4	0	0	1	0%	-75%
Total	110	116	761	60	53	526	-12%	-31%
Arrests	39	41	293	38	19	302	-50%	3%
Calls For Service	548	518	3581	415	384	3570	-7%	0%

Boundaries: Police Reporting Areas 323, 324 & 330

Coconut Grove NET



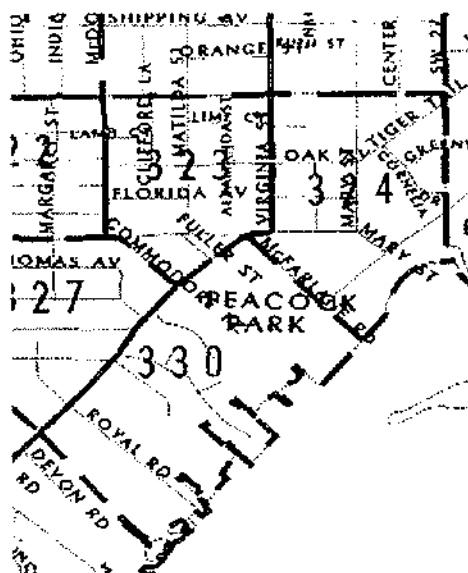
City of Miami
Selected Shopping Areas
CAD Comparison
Crime Reductions by Category

Grove Business District

	2000 August	2000 September	2000 Y.T.D.	2001 August	2001 September	2001 Y.T.D.	% Change September 2001 vs August 2001	% Change Y.T.D. 2000 vs 2001
Stolen M.V.	12	6	82	5	4	56	-20%	-32%
Burglary	4	4	43	4	2	30	-50%	-30%
Larceny	76	56	550	31	31	332	0%	-40%
Robbery	3	5	27	3	4	28	33%	4%
Assault/Battery	20	16	142	10	15	135	50%	-5%
Sex Offenses	1	1	5	0	0	1	0%	-80%
Total	116	88	849	53	56	582	6%	-31%
Arrests	41	263	556	19	12	314	-37%	-44%
Calls For Service	518	764	4345	384	398	3968	4%	-9%

Boundaries: Police Reporting Areas 323, 324 & 330

Coconut Grove NET



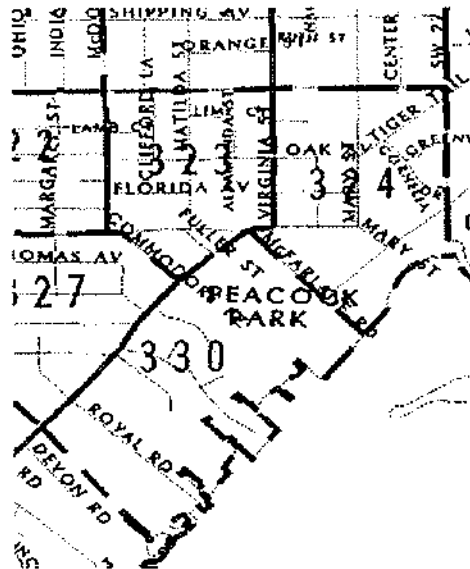
City of Miami
Selected Shopping Areas
CAD Comparison
Crime Reductions by Category

Grove Business District

	2000 September	2000 October	2000 Y.T.D.	2001 September	2001 October	2001 Y.T.D.	% Change October 2001 vs September 2001	% Change Y.T.D. 2000 vs 2001
Stolen M.V.	6	11	93	4	11	67	175%	-28%
Burglary	4	3	46	2	6	36	200%	-22%
Larceny	56	40	590	31	34	366	10%	-38%
Robbery	5	5	32	4	1	29	-75%	-9%
Assault/Battery	16	23	165	15	7	142	-53%	-14%
Sex Offenses	1	0	5	0	0	1	0%	-80%
Total	88	82	931	56	59	641	5%	-31%
Arrests	263	45	601	12	24	338	100%	-44%
Calls For Service	764	567	4912	398	396	4364	-1%	-11%

Boundaries: Police Reporting Areas 323, 324 & 330

Coconut Grove NET



City of Miami
Selected Shopping Areas
CAD Comparison
Crime Reductions by Category

Grove Business District

	2000 October	2000 November	2000 Y.T.D.	2001 October	2001 November	2001 Y.T.D.	% Change November 2001 vs October 2001	% Change Y.T.D. 2000 vs 2001
Stolen M.V.	11	5	98	11	3	70	-73%	-29%
Burglary	3	5	51	6	0	36	-100%	-29%
Larceny	40	67	657	34	42	408	24%	-38%
Robbery	5	2	34	1	5	34	400%	0%
Assault/Battery	23	21	186	7	7	149	0%	-20%
Sex Offenses	0	1	6	0	1	2	N/M	-67%
Total	82	101	1032	59	58	699	-2%	-32%
Arrests	45	48	649	24	22	360	-8%	-45%
Calls For Service	567	505	5417	396	423	4787	7%	-12%

Boundaries: Police Reporting Areas 323, 324 & 330

Coconut Grove NET



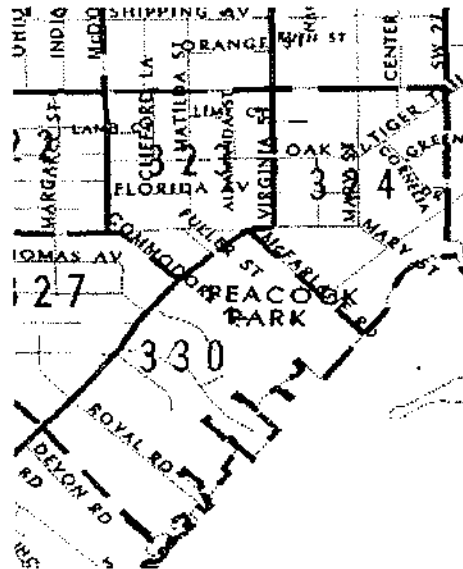
City of Miami
Selected Shopping Areas
CAD Comparison
 Crime Reductions by Category

Grove Business District

	2000 November	2000 December	2000 Y.T.D.	2001 November	2001 December	2001 Y.T.D.	% Change November 2001 vs December 2001	% Change Y.T.D. 2000 vs 2001
Stolen M.V.	5	8	106	3	4	74	33%	-30%
Burglary	5	6	57	0	1	37	N/M	-35%
Larceny	67	62	719	42	36	444	-14%	-38%
Robbery	2	1	35	5	7	41	40%	17%
Assault/Battery	21	16	202	7	8	157	14%	-22%
Sex Offenses	1	1	7	1	0	2	-100%	-71%
Total	101	94	1126	58	56	755	-3%	-33%
Arrests	48	39	688	22	22	382	0%	-44%
Calls For Service	505	565	5982	423	567	5354	34%	-10%

Boundaries: Police Reporting Areas 323, 324 & 330

Coconut Grove NET



City of Miami
Selected Shopping Areas
CAD Comparison
Crime Reductions by Category

Grove Business District

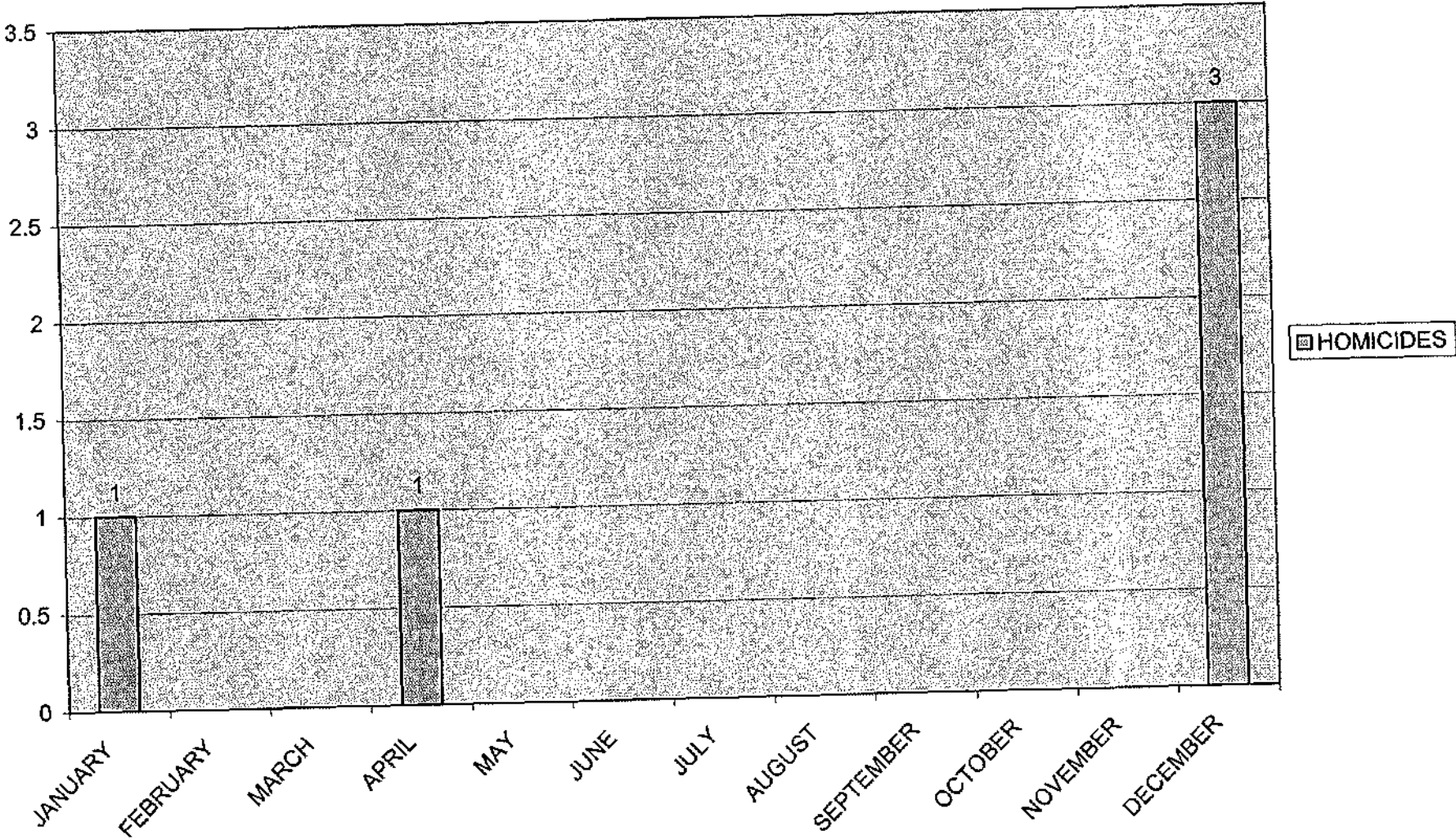
	1999 November	1999 December	1999 Y.T.D.	2000 November	2000 December	2000 Y.T.D.	% Change November 2000 vs December 2000	% Change Y.T.D. 99 -vs- 2000
Stolen M.V.	14	10	110	5	8	106	60%	-4%
Burglary	6	3	51	5	6	57	20%	12%
Larceny	63	69	758	67	62	719	-7%	-5%
Robbery	2	4	41	2	1	35	-50%	-15%
Assault/Battery	11	15	199	21	16	202	-24%	2%
Sex Offenses	0	0	3	1	1	7	0%	133%
Total	96	101	1162	101	94	1126	-7%	-3%
Arrests	52	69	703	48	39	688	-19%	-2%
Calls For Service	528	478	6396	505	565	5982	12%	-6%

Boundaries: Police Reporting Areas 323, 324 & 330

Coconut Grove NET



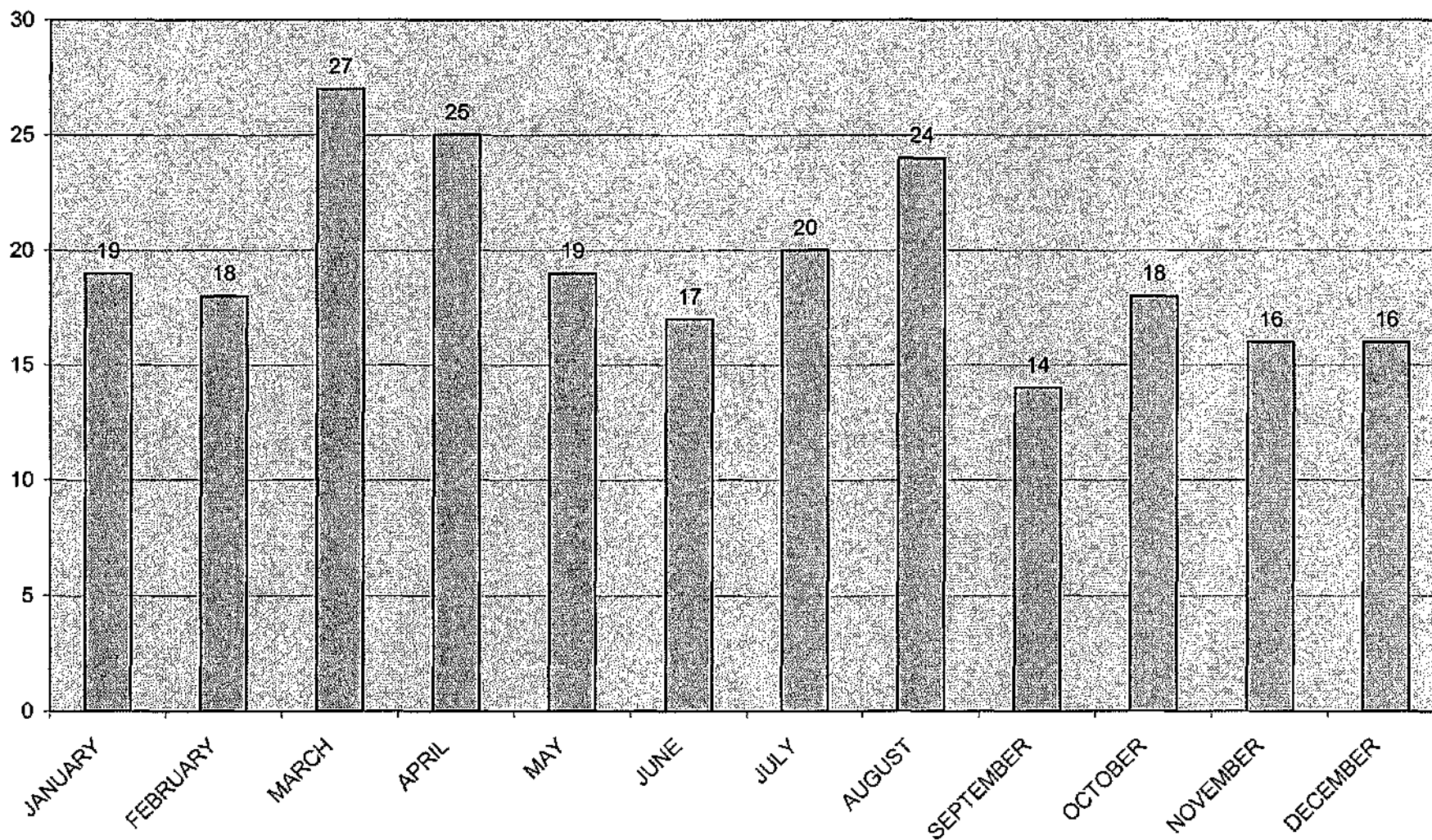
HOMICIDES
2001



Prepared by: P. Johnson
1/31/2002

COCONUT GROVE

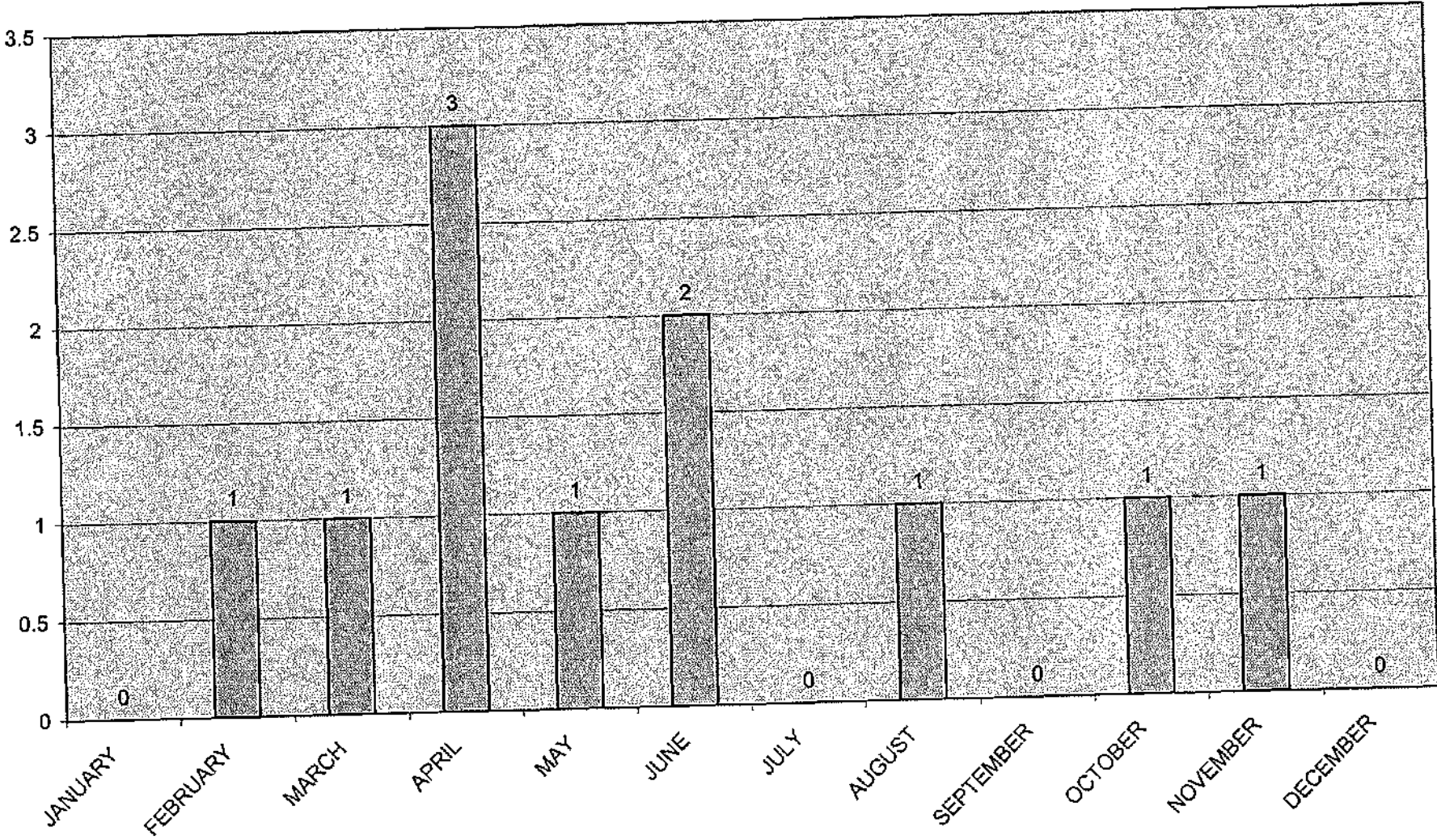
**STOLEN M. V.
2001**



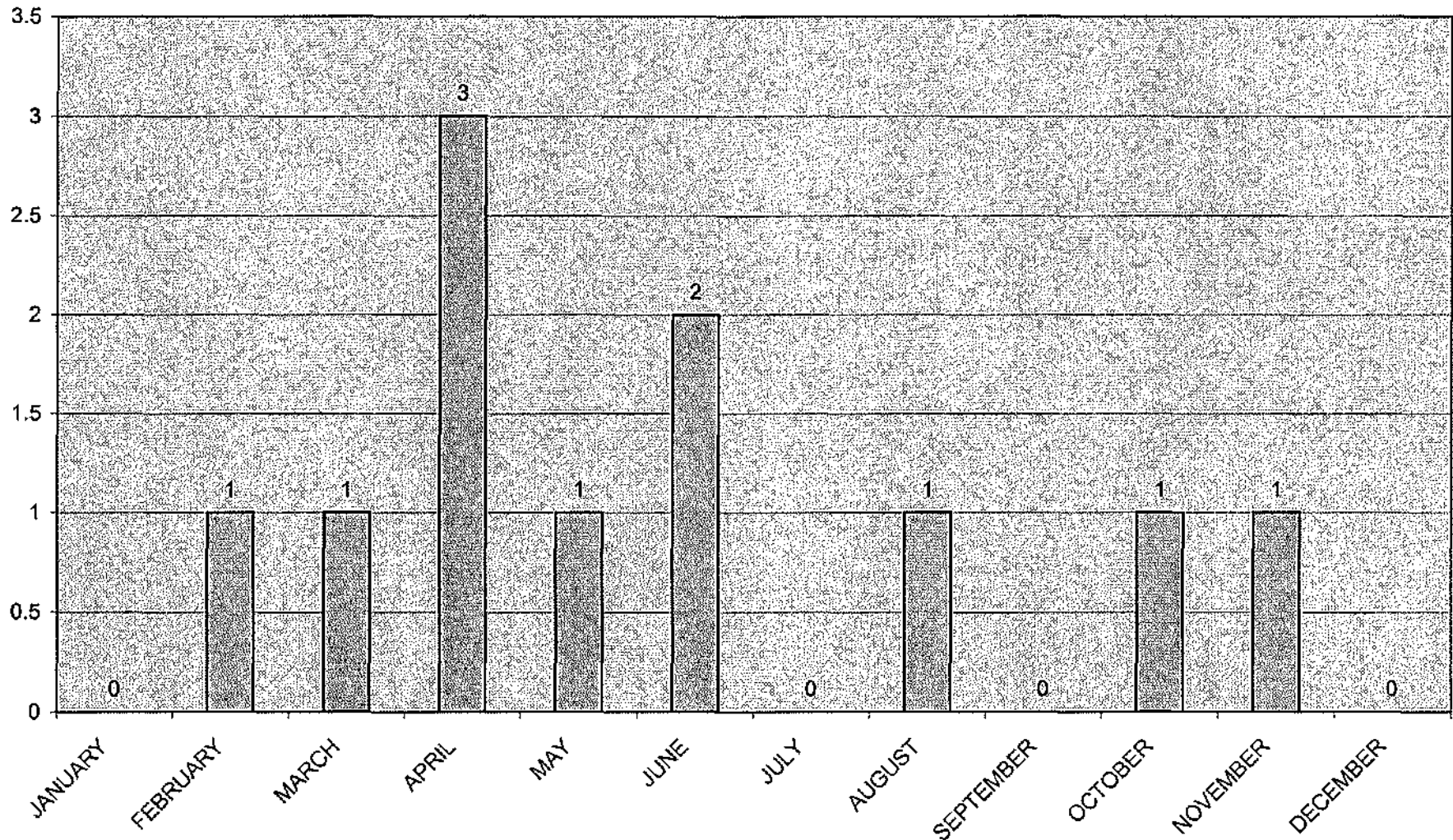
Prepared by: P. Johnson
1/31/2002

COCONUT GROVE

**BURGLARY
2001**



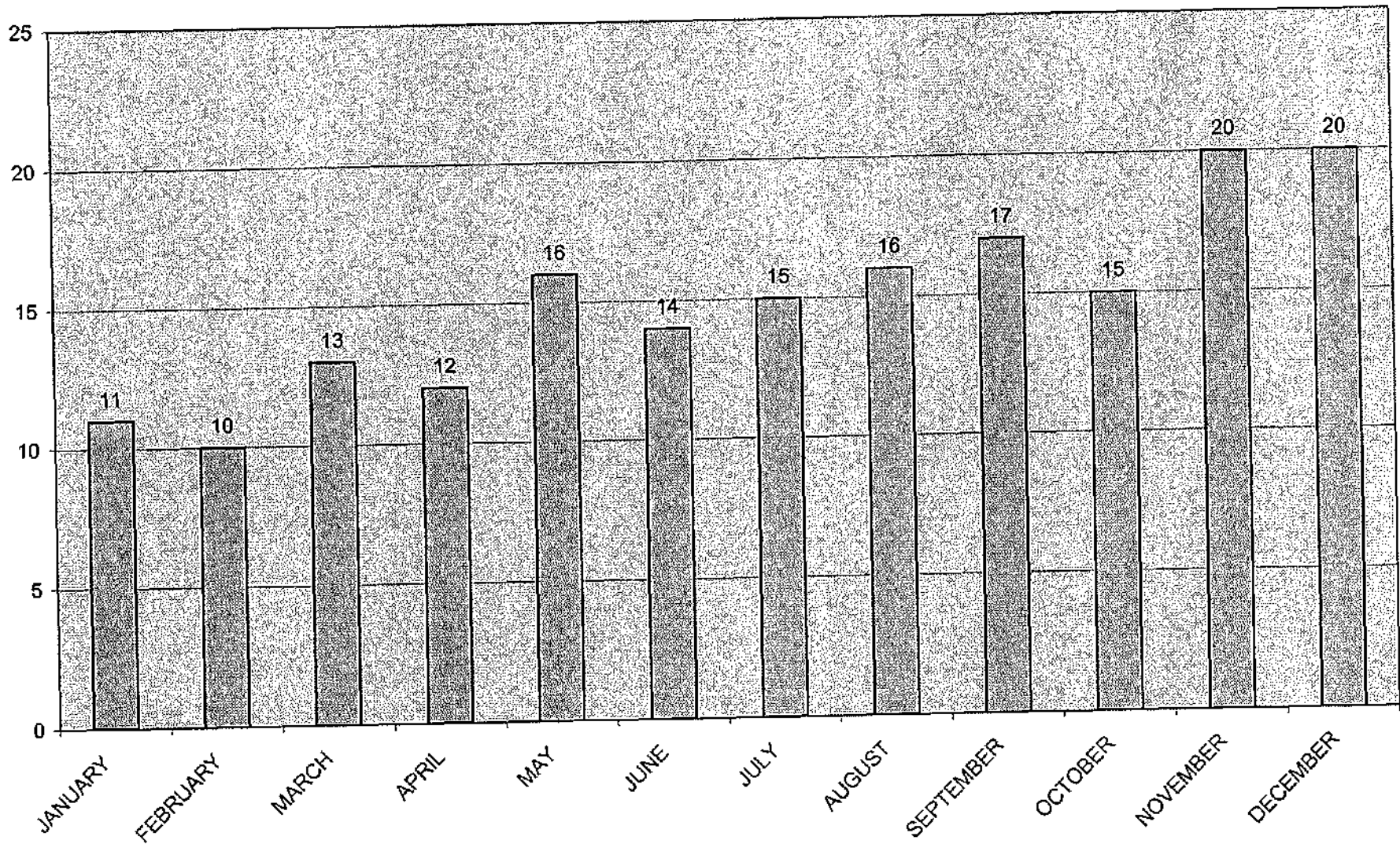
LARCENY 2001



Prepared by: P. Johnson
1/31/2002

COCONUT GROVE

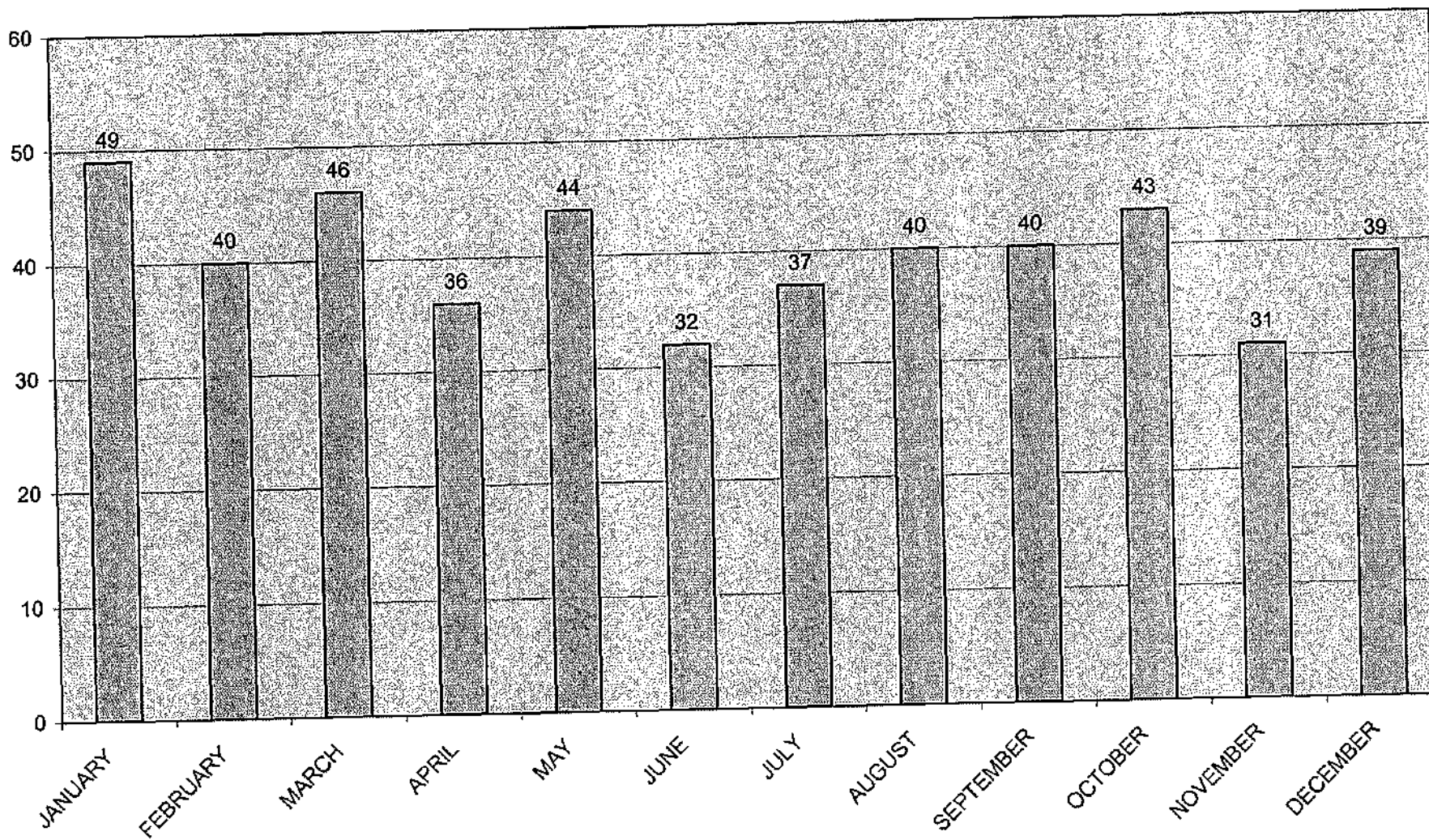
ROBBERY 2001



Prepared by: P. Johnson
1/31/2002

COCONUT GROVE

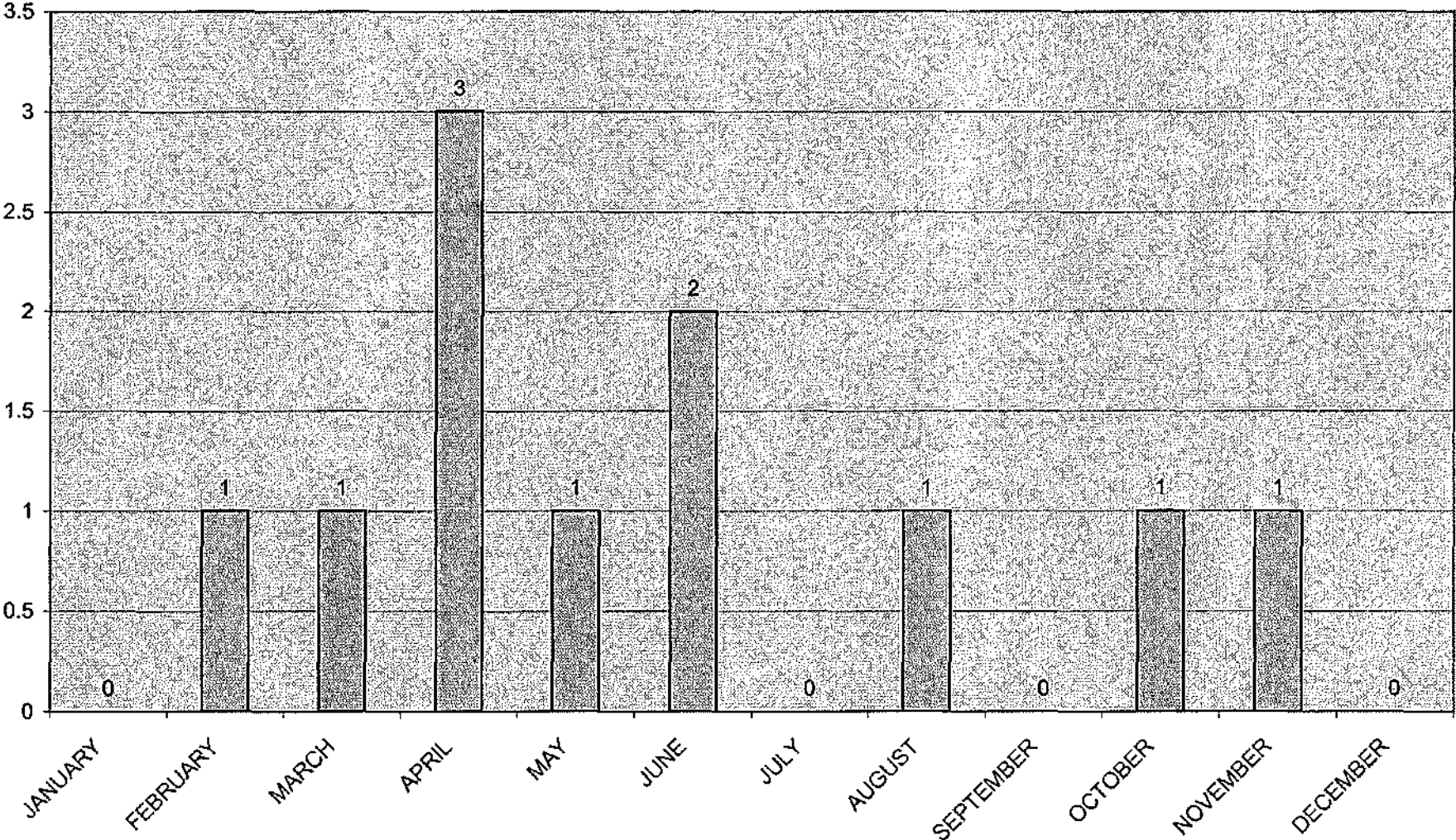
**ASSAULT/BATTERY
2001**



Prepared by: P. Johnson
1/31/2002

COCONUT GROVE

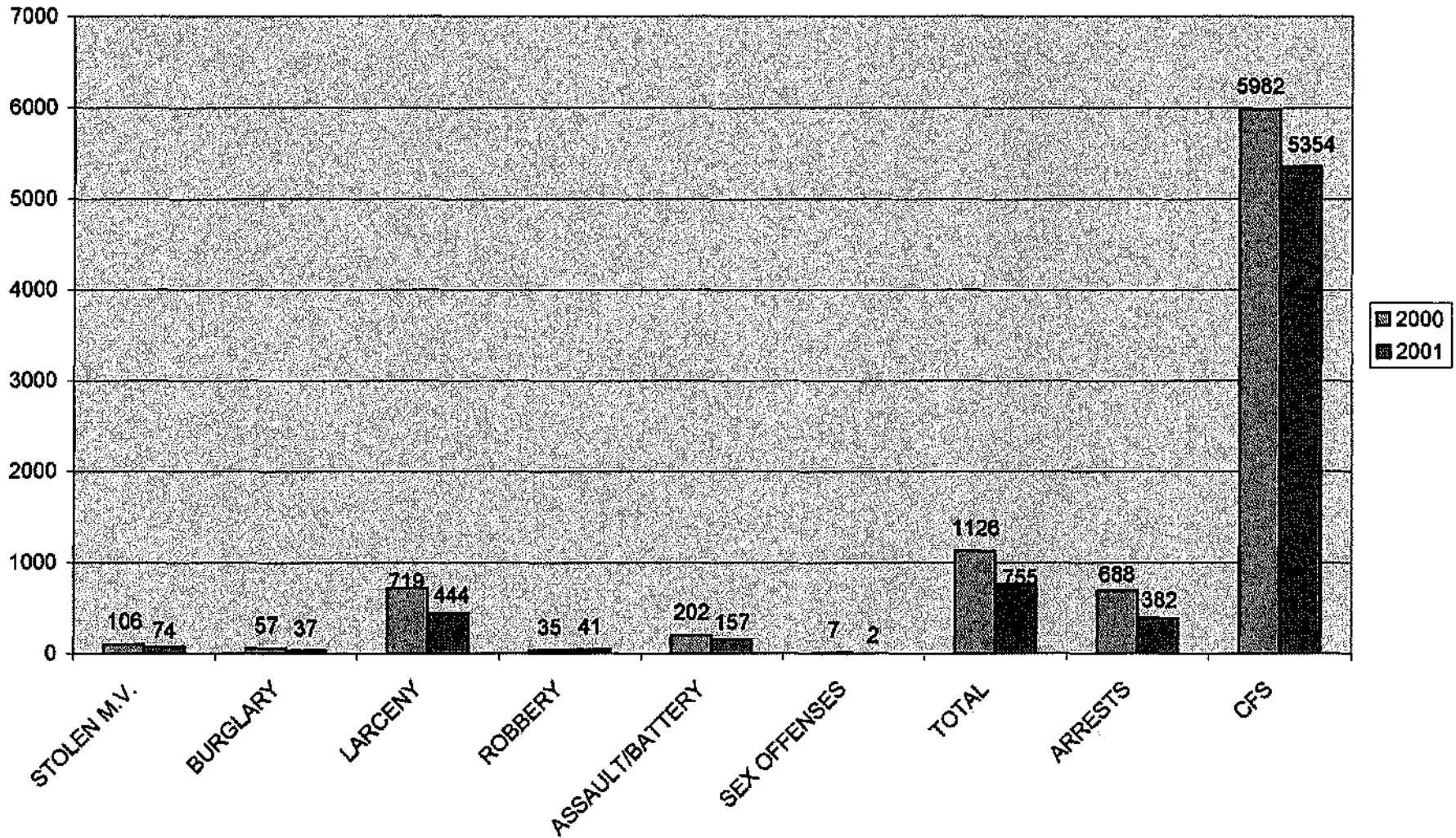
**SEX OFFENSES
2001**



Prepared by: P. Johnson
1/31/2002

COCONUT GROVE

Grove Business District Cad Comparison 2000 vs 2001



Coconut Grove Cad Comparison 2000 vs 2001

